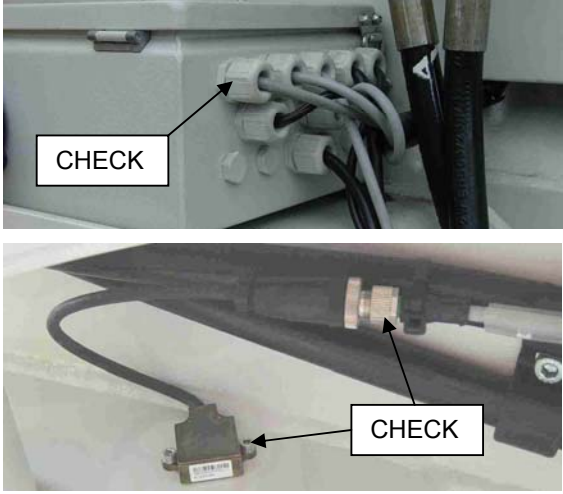





TASK INSTRUCTIONS FOR SMARTlift PDI

P0024	V0109	Product Support	10 Jan 09
-------	-------	-----------------	-----------

The following procedure should be followed in addition to the normal pre-delivery Sidelifter check.

<u>VISUAL CHECK</u>	<u>TASK</u>
	<p>Firstly perform a visual check.</p> <ul style="list-style-type: none"> • Ensure that all junction box cable glands are tight, • Check all 8 angle sensors are securely fixed • Check all angle sensor plug/socket assemblies are tight. • Check Pressure Sensor Plug is tight

<u>VOLTAGE CHECK</u>	<u>TASK</u>
 <p>Figure 1</p>	<p>Using the Voltmeter Toggle Switch, check the voltage of the Main Battery and ECU Battery.</p> <p>If the ECU Battery reads less than 11.5v run the alternator to charge the battery.</p>



3: STABILISER EXTENSION SENSORS CHECK	TASK
<pre> FRONT STABILISER EXTENSION SENSORS EXTENSION = 0 MM ENCODER COUNT= 0TEETH MAGNETIC = 1 OPTICAL = 0 FOOT DOWN SWITCH NORMALLY OPEN = 0 NORMALLY CLOSED = 1 RETURN TO MENU </pre>	<ul style="list-style-type: none"> Put the Sidelifter into Stabiliser Mode Navigate MENU >> VIEW SENSOR VALUES >> FRONT STABILISER EXTENSION SENSORS With the Stabiliser fully retracted check the values are as per Figure 2 Extend the Stabiliser and observe the EXTENSION count up. The OPTICAL sensor should alternate between 1 and 0 as the castellated plastic strip passes under the sensor. Note: EXTENSION = 0mm until the first tooth of the castellated plastic strip is seen.
Figure 2	

4: STABILISER EXTENSION SENSORS CHECK	TASK
<pre> FRONT STABILISER EXTENSION SENSORS EXTENSION = 1935MM ENCODER COUNT=31TEETH MAGNETIC = 1 OPTICAL = 1 FOOT DOWN SWITCH NORMALLY OPEN = 0 NORMALLY CLOSED = 1 RETURN TO MENU </pre>	<ul style="list-style-type: none"> With the Stabiliser fully extended check the values are as per Figure 3. <ul style="list-style-type: none"> For a SB330 EXTENSION = 1935mm For a SB361/401 EXTENSION = 1983mm Put the Stabiliser Foot on the ground and observe the change <ul style="list-style-type: none"> NORMALLY OPEN =1 NORMALLY CLOSED = 0 Repeat this for the Rear Crane.
Figure 3	



5: SB401 ANGLE SENSORS CHECK

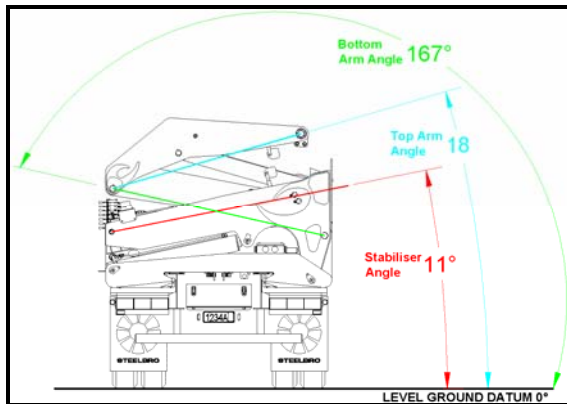


Figure 4

TASK

- For an SB401
- Park the Sidelifter on level ground
- Ensure that the cranes and stabilisers are fully folded
- Navigate MENU >> VIEW SENSOR VALUES >> FRONT ANGLE SENSORS
- Check that the Angle Sensor Values are as per Figure 4. Tolerance $\pm 1^\circ$.
- Stabiliser Angle 11°
- Bottom Arm Angle 167°
- Top Arm Angle 18°
- Elevation 0°
- Camber 0°
- Repeat for REAR ANGLE SENSORS

6: SB330 ANGLE SENSORS CHECK

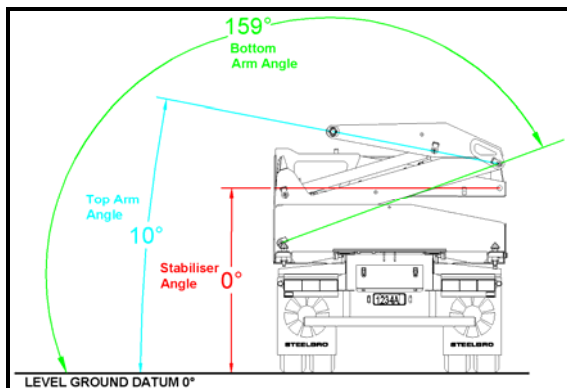
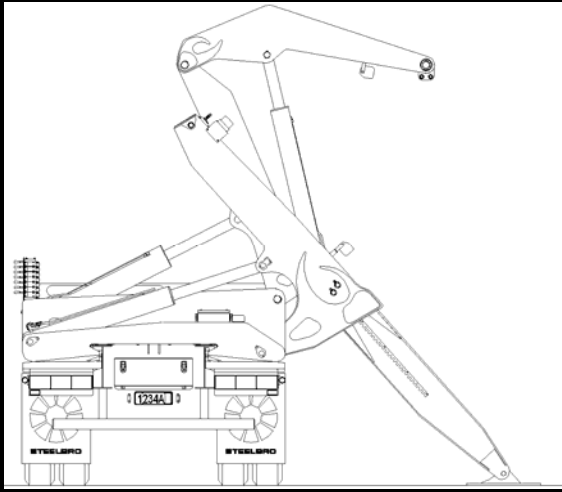


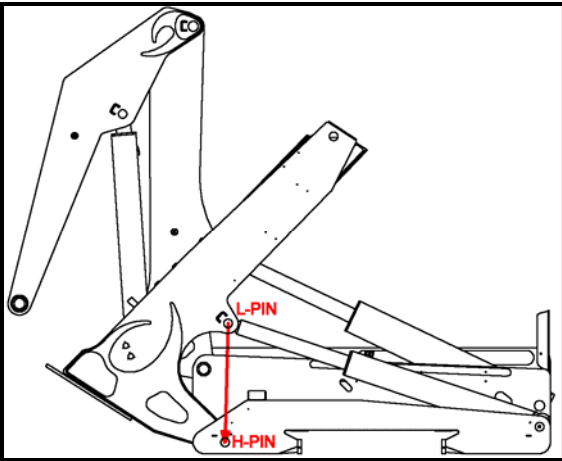
Figure 5

TASK

- For an SB330
- Park the Sidelifter on level ground
- Ensure that the cranes and stabilisers are fully folded
- Navigate MENU >> VIEW SENSOR VALUES >> FRONT ANGLE SENSORS
- Check that the Angle Sensor Values are as per Figure 5. Tolerance $\pm 1^\circ$.
- Stabiliser Angle 0°
- Bottom Arm Angle 159°
- Top Arm Angle 10°
- Elevation 0°
- Camber 0°
- Repeat for REAR ANGLE SENSORS



7: <u>ANGLE SENSORS CHECK</u>	<u>TASK</u>
 <p data-bbox="467 779 570 806">Figure 6</p>	<ul style="list-style-type: none"> • Deploy the Stabiliser and observe the Stabiliser Angle Sensor count DOWN. • Use the Stabiliser to tilt the trailer up and observe the CAMBER count UP. • Move the Bottom Arm up and observe the Bottom Arm Angle Sensor count DOWN. • Move the Top Arm up and observe the Top Arm Angle Sensor count UP. • Fully extend the Top Arm and observe the PRESSURE sensor value increase • Repeat for REAR ANGLE SENSORS

8: <u>STABILISER ANGLE SENSOR CALIBRATION CHECK</u>	<u>TASK</u>
 <p data-bbox="467 1482 570 1509">Figure 7</p>	<ul style="list-style-type: none"> • Angle the Stabiliser and (using a plumb-bob) align the L-Pin vertical to H-Pin. • Navigate MENU >> VIEW SENSOR VALUES >> FRONT ANGLE SENSORS • For a SB330 Stabiliser Angle = $38^{\circ} \pm 1^{\circ}$ • For a SB401 Stabiliser Angle = $43^{\circ} \pm 1^{\circ}$ • Check if the Angle Sensor is loose if angles do not match the specification. • Repeat for the Rear Stabiliser



9: BOTTOM ARM ANGLE SENSOR CALIBRATION CHECK

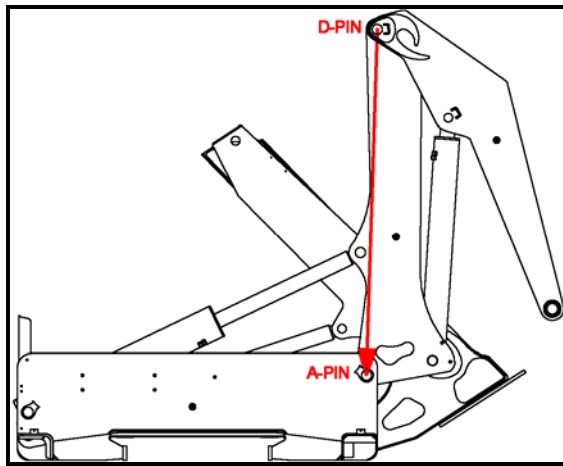


Figure 8

TASK

- Angle the Bottom Arm and align the D-Pin vertical to the A-Pin
- Navigate MENU >> MANUFACTURERS AREA (xxxx) >> VIEW PIN DISTANCES >> FRONT PIN DISTANCES
- The Horizontal Distance AD should equal 0mm \pm 15mm. Stopping the diesel engine will allow a more steady reading to be taken.
- Repeat for the Rear Bottom Arm

xxxx - contact STEELBRO

10: TOP ARM ANGLE SENSOR CALIBRATION CHECK

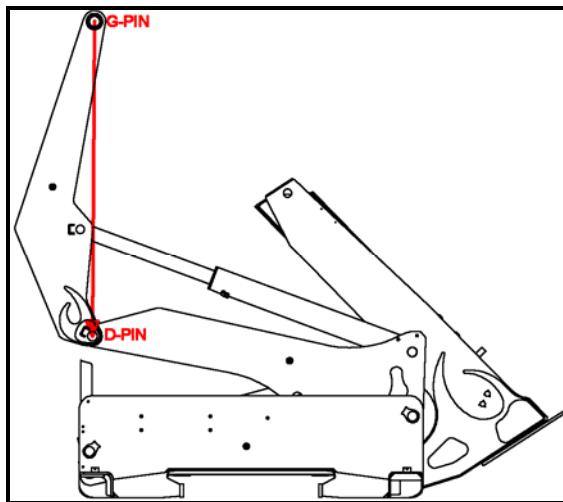


Figure 9

TASK

- Angle the Top Arm and align the G-Pin vertical to the D-Pin
- Navigate MENU >> MANUFACTURERS AREA (xxxx) >> VIEW PIN DISTANCES >> FRONT PIN DISTANCES
- The Horizontal Distance DG should equal 0mm \pm 15mm. Stopping the diesel engine will allow a more steady reading to be taken.
- Repeat for the Rear Top Arm

xxxx - contact STEELBRO